

Collaborative Action Research

Site Visits



FIRST SITE VISIT:

- Think of a question related to the theme of Indigenous language revitalization and cultural learning that you would like to answer.
- Think of possible activities you could do with your students to help you to answer the question.
- Working collaboratively with your co-workers and with members of the NOW Play team, refine your question and activity.



IN BETWEEN SITE VISITS:

- Carry out the activity, making video recordings and taking pictures of your students engaging in the activity and of any materials coming from the activity.
- Talk about your experiences with other NOW Play research practitioners in your school or community.



SECOND SITE VISIT:

- Reflect on your experiences with other practitioners in your school and/or community. Members of the university team will guide you through the analysis of your data by:
 - Watching the videos, looking at the photos and other materials that you have flagged as interesting, and
 - Discussing the curricular and cultural learning your students demonstrate through their actions and words, and in their artifacts.
- Come up with new questions and create follow-up activities or brainstorm a new direction for your research.



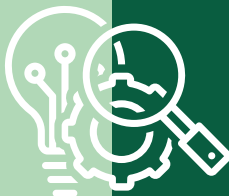
THIRD SITE VISIT:

- Reflect on your experiences and look at the pictures, videos, and materials with members of the university team.
- If you believe you have answered your question, you may want to prepare your work for sharing within the partnership (e.g., poster presentation), and/or outside the partnership (e.g., academic conference presentation; academic journal article).

The 2025 Gathering of NOW Play Partners

NEW RESEARCH PRACTITIONERS

- Discuss your action research with others around the table.
 - Members of the OISE student team will work with you to create a poster displaying your work in the weeks leading up to the Gathering.
 - During the Gathering, while seated around a table, you will have two opportunities to talk about your work and listen to other research practitioners talk about their work.



RETURNING RESEARCH PRACTITIONERS

- Present your action research to the whole group.
 - Members of the OISE student team will work with you to create a poster displaying your work in the weeks leading up to the Gathering.
 - At the Gathering, for those research practitioners who are interested, present your research formally to the whole group.